

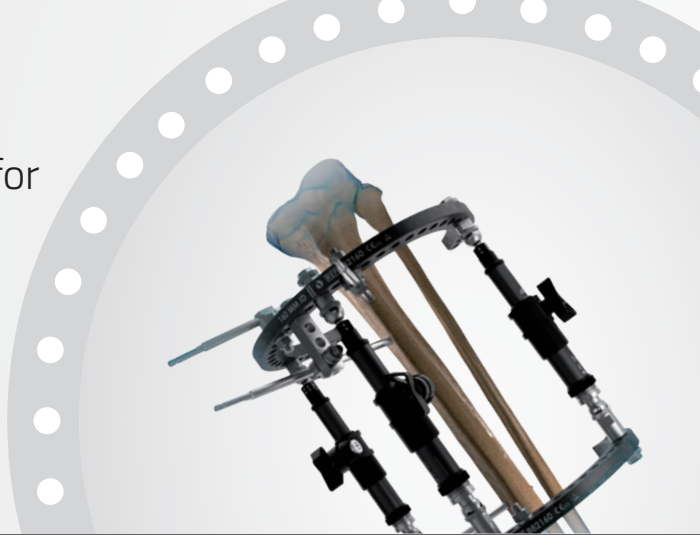
TrueLok™ EVO

Ring Fixation System

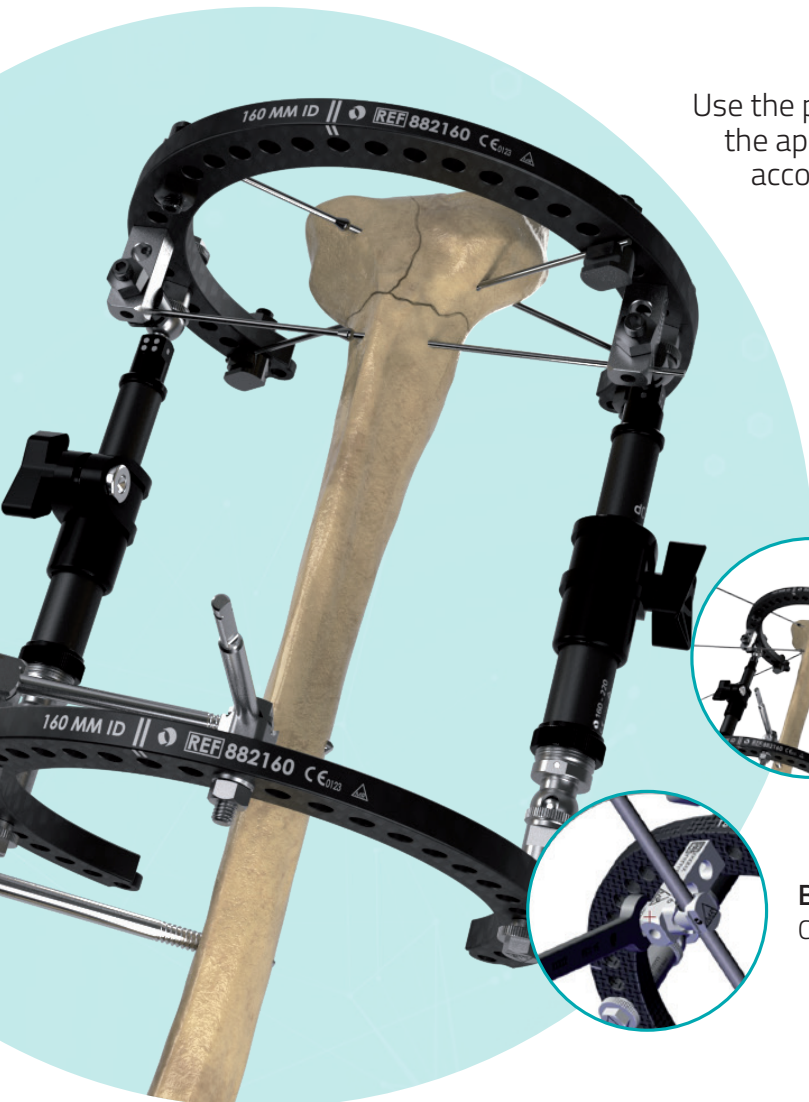
Evolution All Around



TrueLok™ EVO (TL-EVO) System is indicated for fractures, pseudarthrosis/non-unions, lengthening, joint arthrodesis and correction of bony or soft tissue deformities and defects in long bones and in the foot



Step 1 Place



Use the provided templates to choose the appropriate ring and strut sizes according to limb dimensions



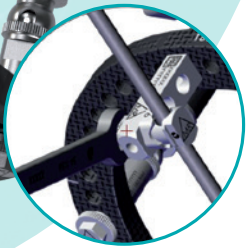
Apply two TL-EVO rings connected by two radiolucent struts

Secure the rings to the limb with either wires and/or half pins



Wire insertion

Apply three wires for optimal stability



Bone screws

Connect them directly to the rings or spaced, using posts

Versatile

TL-EVO System is compatible with TrueLok™ and TL-HEX components

Radiolucent Frame

TL-EVO Rings and Struts are made of carbon fiber to enhance the radiolucency of the frame, allowing for clear visualization of the bone under X-ray

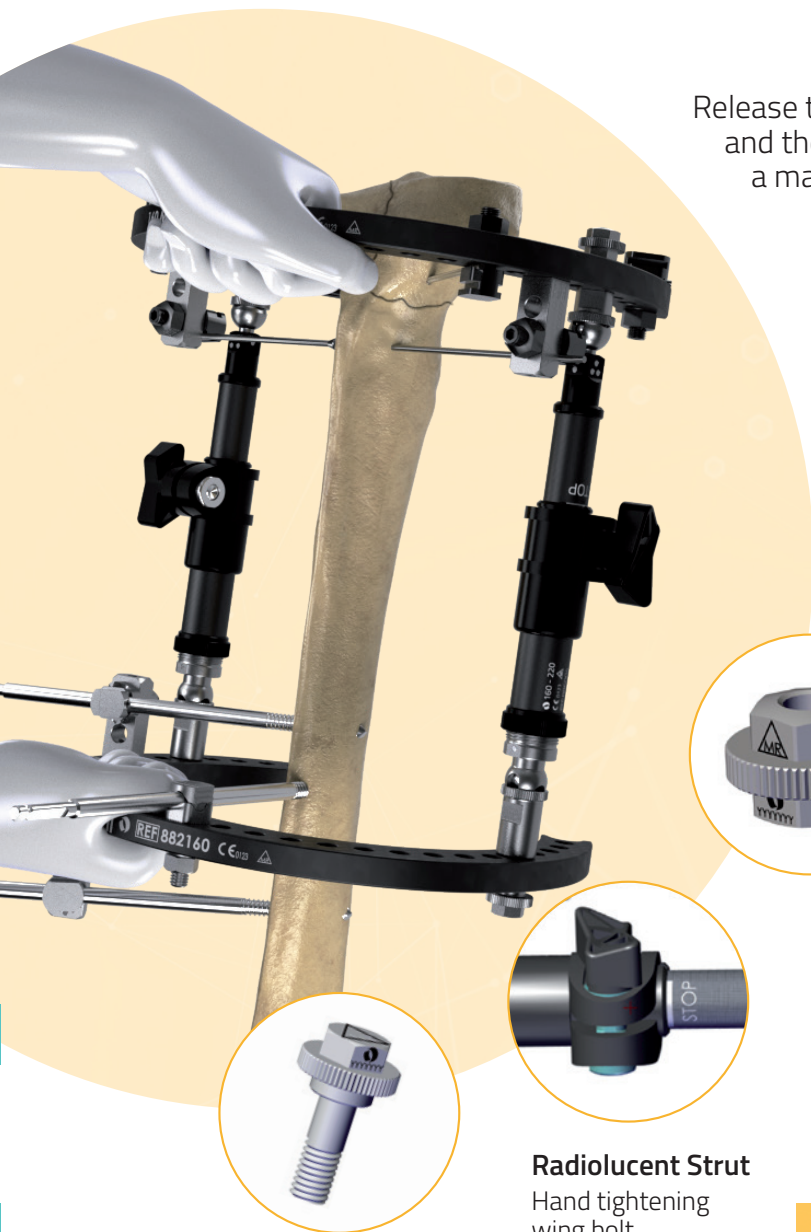


3 Steps for T

- Pre-assembled in sterile frame sets

- Radiolucent

Step 2 Reduce

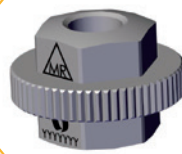


Release the central wing bolt, the speed nut and the speed bolt on each strut to perform a manual reduction

To stabilize reduction, just hand-tighten all speed nuts, speed bolts and wing bolts

Only tighten the central wing bolts after having tightened the speed nuts and the speed bolts

After achieving the final reduction, tighten all speed nuts and speed bolts with the proper wrench



Speed Nut
Hand tightening



Speed Bolt
Hand tightening



Radiolucent Strut
Hand tightening wing bolt

Simple

Universal components reduce the number of parts needed in surgery

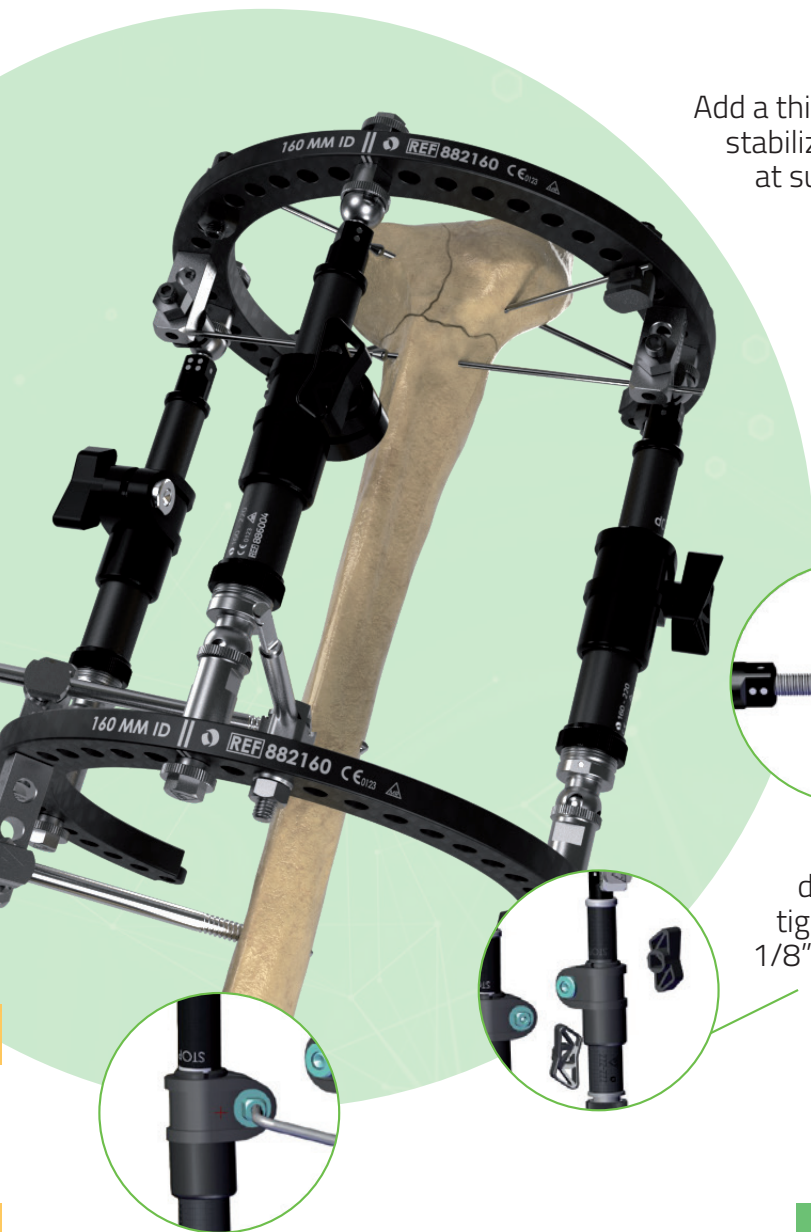
Quick Application

No instrumentation needed to stabilize reduction, just hand-tightening

TL-EVO Frame

- Integrated Dynamization
- MR Conditional

Step 3 Lock



Add a third radiolucent strut for definitive stabilization (fourth strut can be added at surgeon's discretion)

To perform a definitive closure of the strut ball-joints, tighten all the speed nuts and speed bolts using the proper wrench

Turn the plastic bushing of the struts if final micrometric adjustment and compression are needed

Radiolucent Struts

Plastic bushing allows micro-adjustments of the total length of the strut

Finally, remove all the wing bolts to achieve the definitive closure of the telescopic body of the strut, tighten the central locking bolt using an Allen Wrench $1/8''$

Stable

Minimum three quick adjust TL-EVO struts needed to guarantee frame stability

Ease of Use

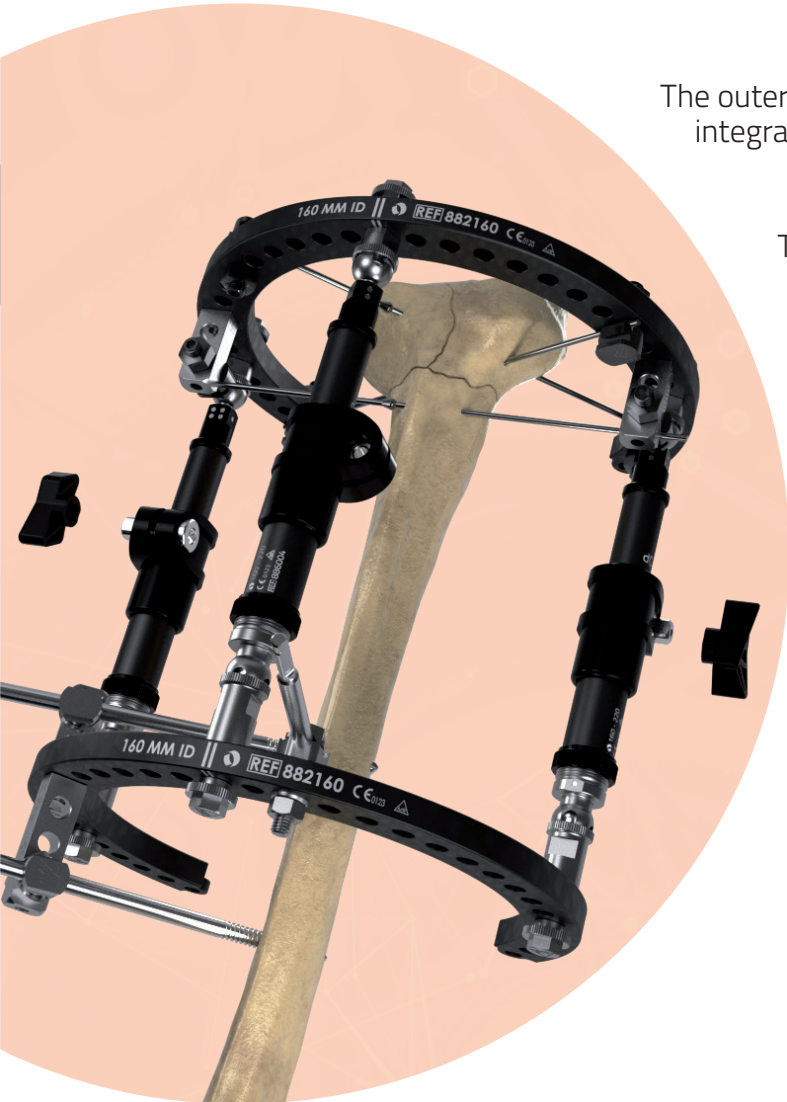
Dedicated sterile packaging with pre-assembled, ready-to-use, sterile sets

OPTIONAL

Step

4

Unlock dynamization



The outer tube of medium/long strut with "dyna" integrates a dynamization module

The dynamization is activated when the integrated dynamization module of the strut is in open position



Upon surgeon's discretion the frame can be dynamized by turning clockwise all the black adjustable rings present at the female end of each TL-EVO strut, unlocking the dynamization module

For detailed information, please refer to the TrueLok™ EVO System Operative Technique

Time Saving

TL-EVO radiolucent struts allow the surgeon to unlock the dynamization of the frame without replacing any component

TL-EVO is tested to be MR Conditional



For detailed information, please refer to the TrueLok™ EVO System IFU.

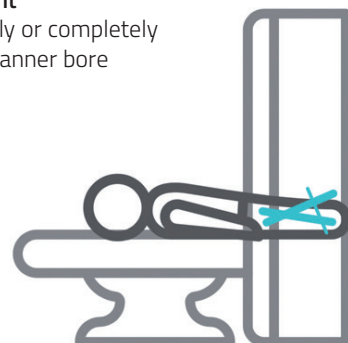
Correct Placement

Construct is completely outside the MR scanner bore



Incorrect Placement

Construct is partially or completely inside in the MR scanner bore



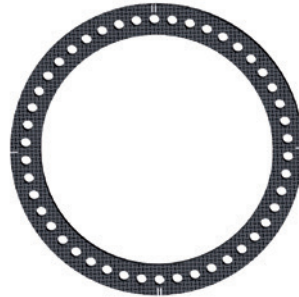
Rings, Footplates and Foot Arches

All rings, footplates and foot arches are offered in 4 different sizes of internal diameters, ranging from 140mm to 200mm. On the surface they have two sets of quadrant markings (double line and single line) to ease positioning and alignment with the limb.

Full Rings

Conventional anterior/posterior marking is a double line, medial/lateral marking is a single line.

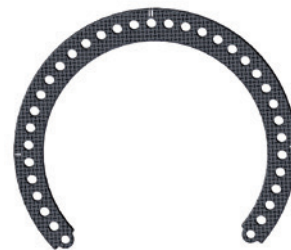
Part #	Description
99-880140	RX FULL RING D 140MM STERILE
99-880160	RX FULL RING D 160MM STERILE
99-880180	RX FULL RING D 180MM STERILE
99-880200	RX FULL RING D 200MM STERILE



5/8 Rings

These partial rings can be useful at the joints to extend the range of possible motion while the fixator is applied.

Part #	Description
99-882140	RX 5/8 MODULAR RING D 140MM STERILE
99-882160	RX 5/8 MODULAR RING D 160MM STERILE
99-882180	RX 5/8 MODULAR RING D 180MM STERILE
99-882200	RX 5/8 MODULAR RING D 200MM STERILE



3/8 Rings

These partial rings can be used to create a full ring in combination with a 5/8 ring.

Part #	Description
99-881140	RX 3/8 MODULAR RING D 140MM STERILE
99-881160	RX 3/8 MODULAR RING D 160MM STERILE
99-881180	RX 3/8 MODULAR RING D 180MM STERILE
99-881200	RX 3/8 MODULAR RING D 200MM STERILE



Footplates

The footplate has two sets of quadrant markings, matching the markings found on rings of the same diameter.

Part #	Description
99-883140	RX FOOTPLATE D 140MM STERILE
99-883160	RX FOOTPLATE D 160MM STERILE
99-883180	RX FOOTPLATE D 180MM STERILE
99-883200	RX FOOTPLATE D 200MM STERILE



Foot arches



They can be connected to the footplates. The foot arches have two hinges (one for each extremity) that allow an angulation range from 0° to 180°.

Part #	Description
99-884140	RX FOOT ARCH D 140MM STERILE
99-884160	RX FOOT ARCH D 160MM STERILE
99-884180	RX FOOT ARCH D 180MM STERILE
99-884200	RX FOOT ARCH D 200MM STERILE



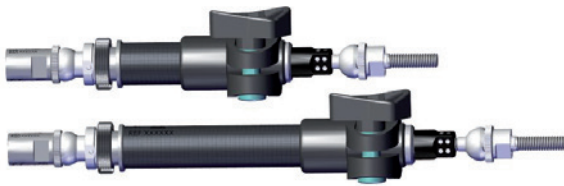
TL-EVO Struts

Struts are available in three sizes: medium static, medium with dynamizer, long with dynamizer. They have a lockable universal hinge on both ends that allows acute angular and rotational corrections. The four sided bushing is marked similar to a dice, with 1, 2, 3 or 4 dots. To provide distraction, turn the bushing in the direction of increasing numbers. To provide compression, turn the bushing in the direction of decreasing numbers.

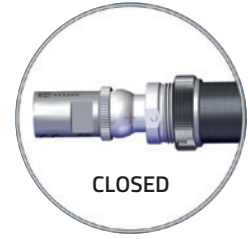
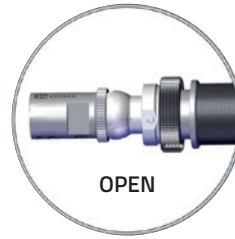



Medium Static Strut does not include dynamization

The outer tube of "medium/long strut with dyna" integrates a dynamization module that can be used to dynamize an existing frame. The dynamization is activated when the integrated dynamization module of the strut is in the open position.



Medium and Long Struts with dynamization included



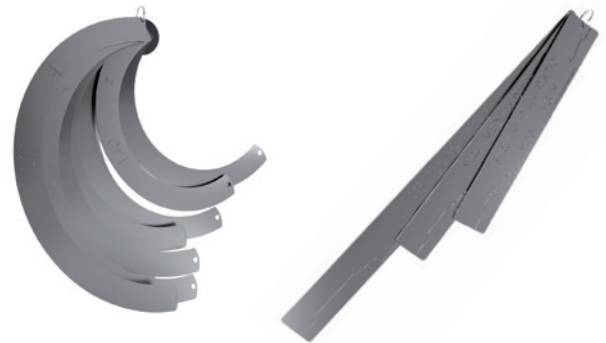
STRUTS 	
Part #	Description
99-886005	TRUELOK EVO RX STRUT LONG WITH DYNA STERILE
99-886004	TRUELOK EVO RX STRUT MEDIUM WITH DYNA STERILE
99-886006	TRUELOK EVO RX STRUT MEDIUM STATIC STERILE

CONNECTION ELEMENTS	
Part #	Description
99-885000M	TLEVO NUT WITH WASHER PACK OF 5 STERILE
99-885001M	TLEVO WIRE FIXATION BOLT PACK OF 4 STERILE
99-885003M	TLEVO BOLT PACK OF 4 L 16.5MM STERILE
99-885007M	TLEVO HALF PIN FIXATION BOLT PACK OF 4 STERILE
99-885002M	TLEVO 8MM HALF PIN FIXATION BOLT PACK OF 4 STERILE
99-885008M	TLEVO SPEED NUT PACK OF 2 STERILE
99-885009M	TLEVO SPEED BOLT PACK OF 2 STERILE
99-885004	TLEVO 2 HOLES POST STERILE
99-885005	TLEVO 3 HOLES POST STERILE
99-885006	TLEVO 4 HOLES POST STERILE

Connection elements are not displayed in this brochure. Please refer to TL-2113-OPT for complete overview.

Sizing Templates for Rings and Struts

SIZING TEMPLATES	
Part #	Description
886663	TRUELOK EVO RING AND STRUT TEMPLATES



Sterile Sets

PRE-ASSEMBLED FRAME SETS



Part #	Description
99-88001	TRUELOK EVO SET RX RINGS D 160MM RX STRUTS LONG STERILE
99-88002	TRUELOK EVO SET RX RINGS D 160MM RX STRUTS MEDIUM STERILE
99-88003	TRUELOK EVO SET RX RINGS D 180MM RX STRUTS LONG STERILE
99-88004	TRUELOK EVO SET RX RINGS D 180MM RX STRUTS MEDIUM STERILE
99-88005	TRUELOK EVO SET RX RINGS D 200MM RX STRUTS LONG STERILE
99-88006	TRUELOK EVO SET RX RINGS D 200MM RX STRUTS MEDIUM STERILE
99-88007	TRUELOK EVO SET RX FOOTPLATE WITH RING D 160MM RX STRUTS LONG STERILE
99-88008	TRUELOK EVO SET RX FOOTPLATE WITH RING D 180MM RX STRUTS LONG STERILE

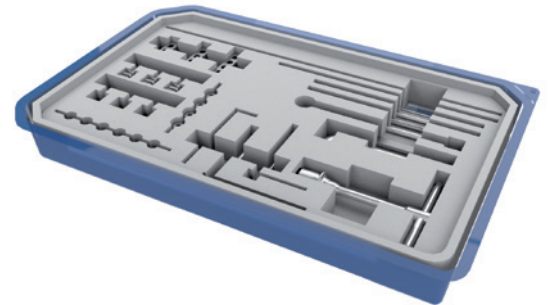
Products may not be available in all markets because product availability is subject to the regulatory and/or medical practices in individual markets. Please contact your Orthofix representative if you have questions about the availability of Orthofix products in your area.



CONNECTION ELEMENT SETS

Part #	Description
99-88018	TRUELOK EVO CONNECTION ELEMENT CYLINDR PINS SET STERILE
99-88019	TRUELOK EVO CONNECTION ELEMENT CONICAL PINS SET STERILE
99-88020	TRUELOK EVO CONN ELEMENT K WIRES CYLINDR PINS SET STERILE

Products may not be available in all markets because product availability is subject to the regulatory and/or medical practices in individual markets. Please contact your Orthofix representative if you have questions about the availability of Orthofix products in your area.



Manufactured by:
 ORTHOFIX Srl
 Via Delle Nazioni 9, 37012 Bussolengo
 (Verona), Italy
 Telephone +39 045 6719000,
 Fax +39 045 6719380

CE₀₁₂₃ **Rx Only**

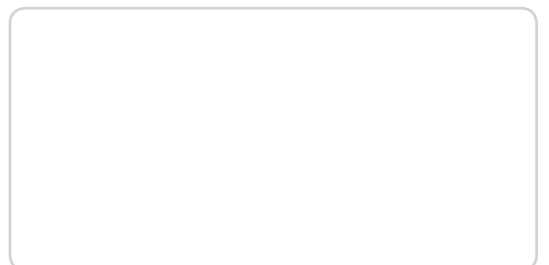
Orthofix products or services referenced herein are trademarks or registered trademarks of Orthofix SRL and its group of companies. All rights reserved.

www.orthofix.com



TL-2126-PL-E0 A 08/21

Distributed by:



ORTHOFIX[®]
 ORTHOPEDICS