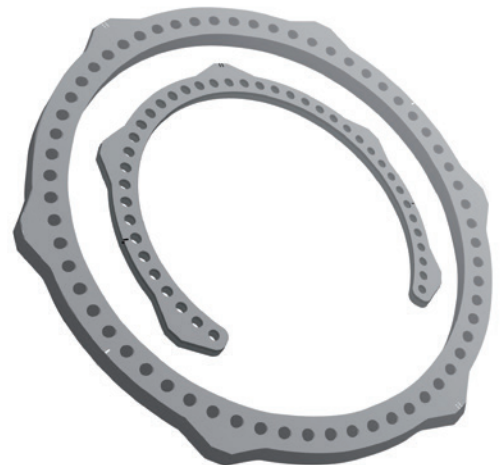
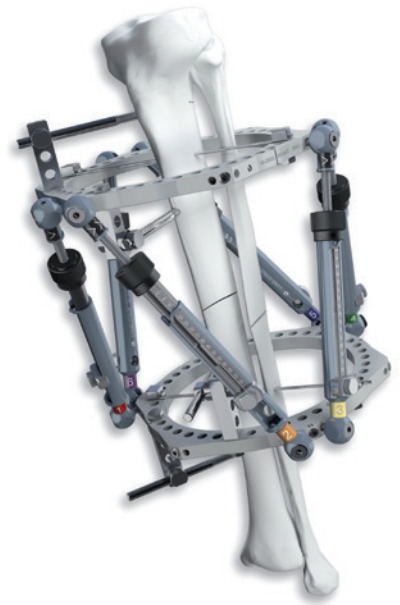


TL-HEX™

TrueLok Hexapod System
Catalogue

**The Future of
the Hexapod System
Built on Solid Circular
Fixation Experience**



TL-HEX...cellent!

Exceptional stability
due to its unique

Stable

aluminum-stainless
steel and metal-plastic
interface

Simplified Hardware
and

Simple

Software for both
Deformity and Trauma
management

The distinctive Strut
design allows for acute
and gradual

Versatile

adjustment in deformity
correction and
complex trauma
procedures

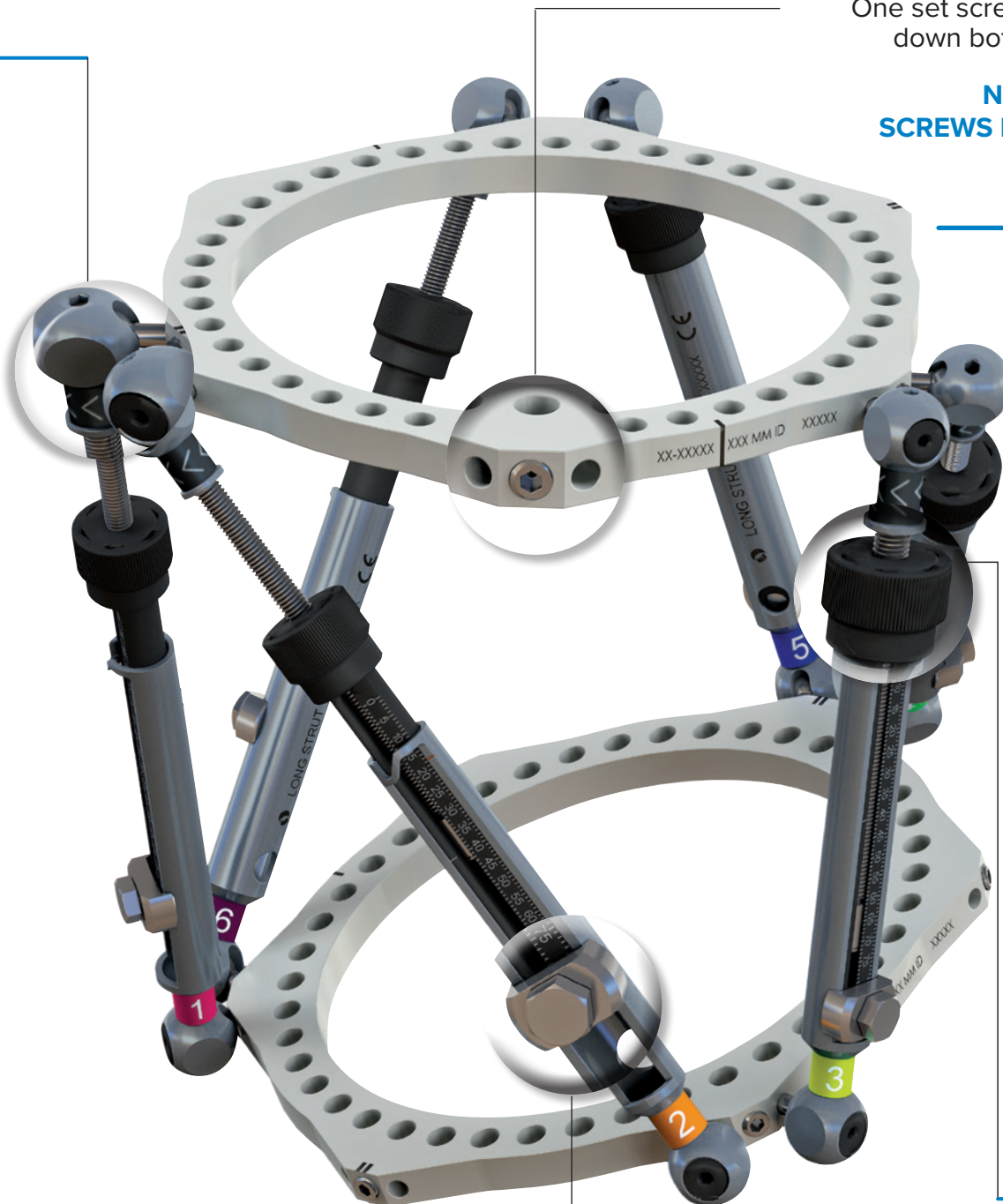
EXCELLENT STABILITY

Unique strut head design increases frame stability

FAST LOCKING

One set screw locks down both struts

NEW SET SCREWS DESIGN

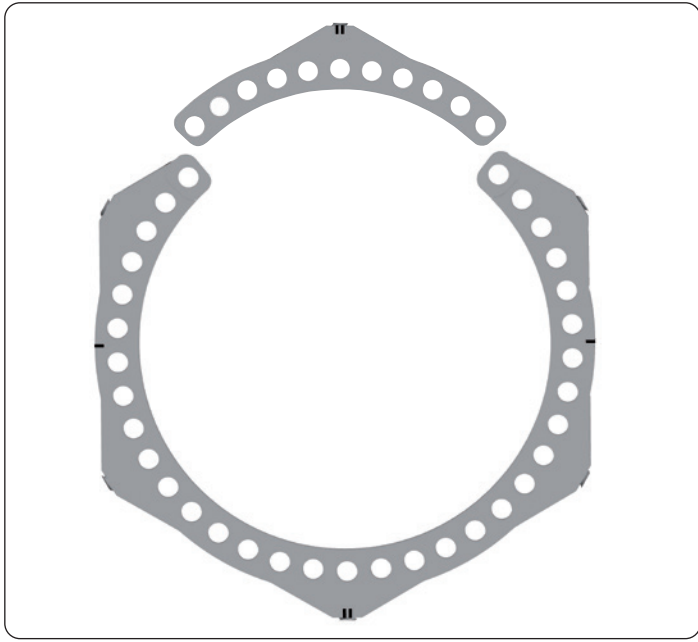


RAPID ADJUSTMENT

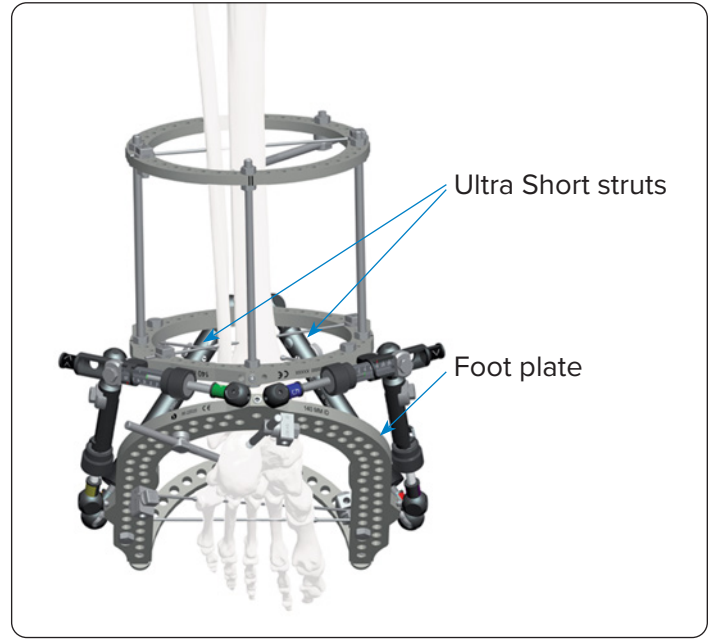
TL-HEX Struts consist of two telescoping aluminum tubes, which can be locked together at various lengths using the side locking bolt and clamp washer

EASY ADJUSTMENT

Simple pull and click method for patient adjustment



The new configuration of 5/8 and 3/8 rings provides a unique feature that allows for transforming a 5/8 ring to a full ring even after the surgery



The new UltraShort strut expands the already broad range of TL-HEX struts, allowing for extreme rings positioning

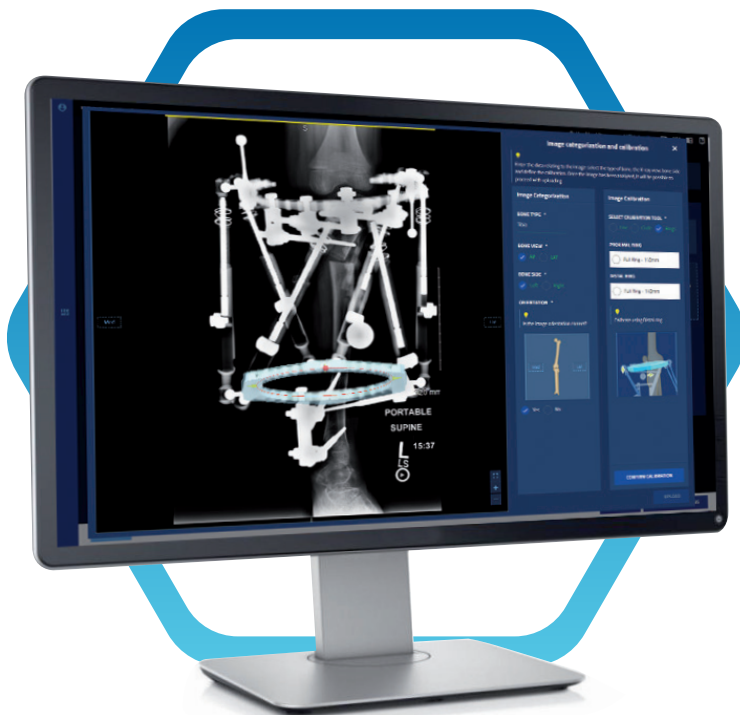
OrthoNext™ Software

Software

The intuitive and user friendly web-based Orthonext 2.1 Software is empowering all surgeons who want a comprehensive support throughout pre/intra/post operative phases

The TL-HEX™ Integrated Module is designed to facilitate pre-operative planning and post-operative correction by uploading of digital x-ray images into the software:

- Measurement calculation
- Frame templates in preplanning
- Automatic data input into TL-HEX Module



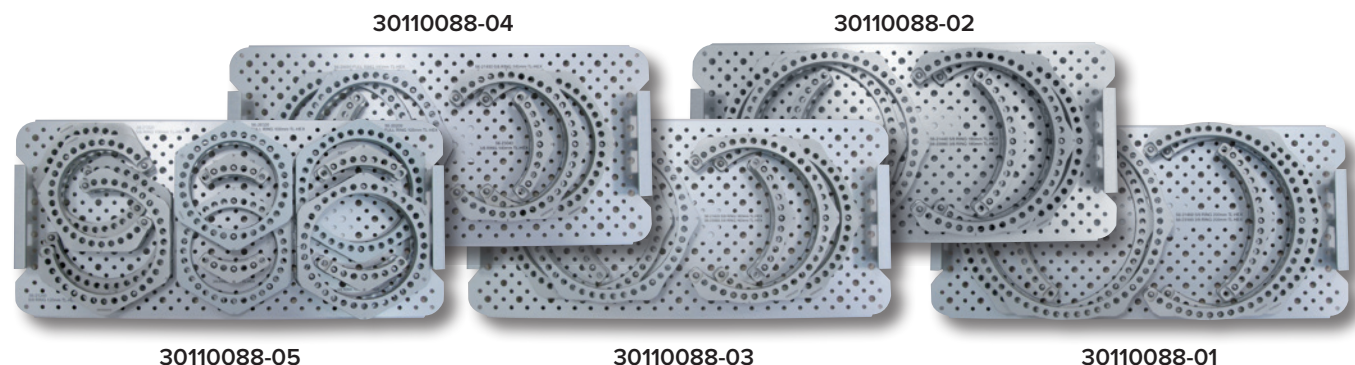
TL-HEX Trays

Rings Tray

The Rings Tray can accommodate all the rings sizes together (2 full rings, 2 5/8 rings and 2 3/8 rings) for a total of 36 components in 5 removable trays.

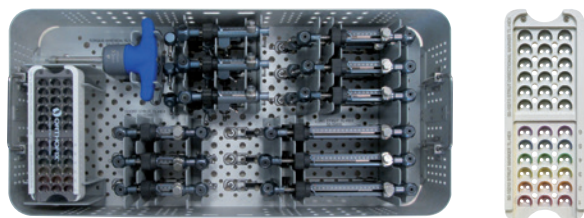
See TL-HEX rings tables for codes details (non-sterile).

See TL-HEX rings tables for material out of the tray (sterile).



Struts Tray

Part Number	Description	Quantity
50-10214	Strut Direction Clip Kit, TL-HEX	3 Kits (18 Strut Direction Clips)
50-10215	Strut Number Clip Kit, TL-HEX	3 Kits (3 of each Strut Number Clip)
54-2236	Torque wrench	1
50-10100	UltraShort, TL-HEX - 45mm-101mm	6
50-10200	Short Strut, TL-HEX - 92mm-122mm	6
50-10300	Medium Strut, TL-HEX - 114mm-184mm	6
50-10400	Long Strut, TL-HEX - 158mm-318mm	6
30110087	Struts Tray, TL-HEX (empty)	

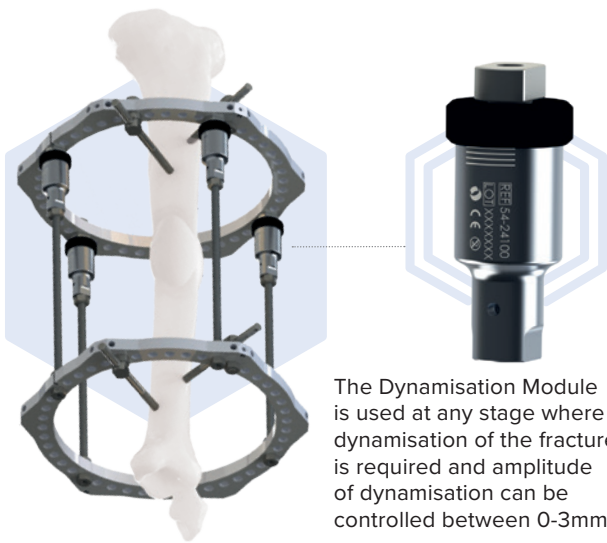


HEX...cellent COMPATIBILITY

All TL-HEX components are fully compatible with the TrueLok Ring Fixation System. Please refer to: TL-1405-OPT and TL-1406-PL.

Additional Components

TL Dynamization Module - 54-24100



The Dynamisation Module is used at any stage where dynamisation of the fracture is required and amplitude of dynamisation can be controlled between 0-3mm.

Magnification Marker - 56-24030



The TL-HEX Magnification Marker is a device specifically developed to calibrate the magnification of X-Rays in Anterior/Posterior and Medial/Lateral views. The ball size is 1 inch (2.54cm).

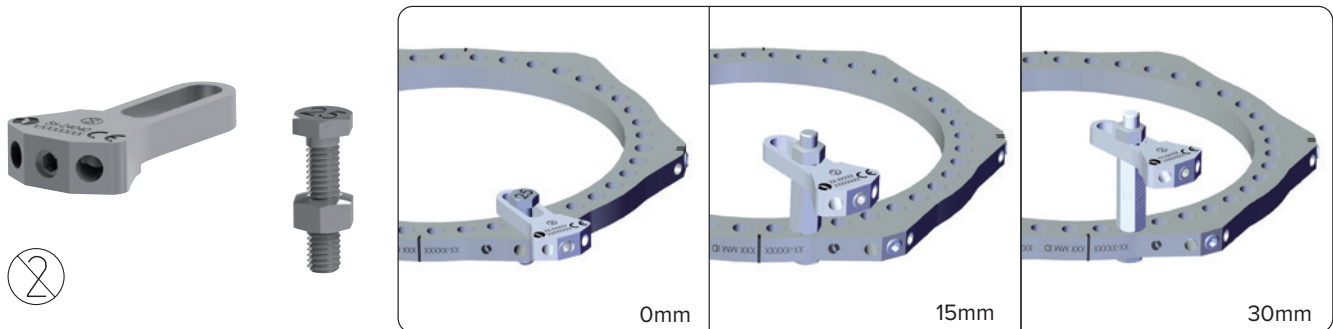
Centering Pin Kit - 56-24020



The TL-HEX Centering pin is specifically developed to locate the centre of the TL-HEX ring on the X-ray both in Anterior/Posterior and Medio-lateral views.

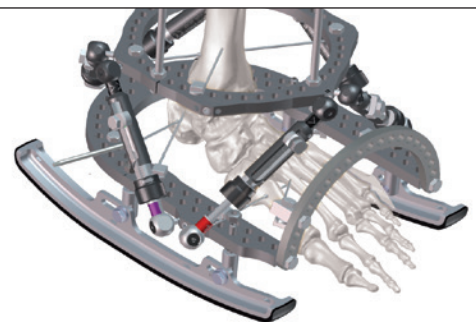
TL-HEX Emergency Tab Kit - 56-24040

To relocate the ends of two adjacent struts in case of temporary struts, ring impingement or temporary strut out of range



TrueLok Rocker Rail - 56-24000

Two adjustable rails to facilitate off-loading and weight bearing



TrueLok System Rocker Rail Extension Kit - 56-24014 (4 items)



TL-HEX Trauma

All that you need... in one tray

Three steps from Trauma Frame to Definitive Hexapod: TL-HEX Trauma combines the advantages of a quick, precise application with the help of software if and when it is needed.

(Refer to the TL-HEX Trauma catalogue for more information)

TL-HEX Components

RINGS

TL-HEX full rings and 5/8 rings are available in 10 sizes with internal diameters of 100mm, 120mm, 140mm, 160mm, 180mm, 200mm, 220mm, 240mm, 280mm and 300mm.

Full Rings

Part Number	Description
56-20320	Full ring, 100mm TL-HEX
56-20200	Full ring, 120mm TL-HEX
56-20000	Full Ring, 140mm, TL-HEX
56-20020	Full Ring, 160mm, TL-HEX
56-20040	Full Ring, 180mm, TL-HEX
56-20060	Full Ring, 200mm, TL-HEX
99-56-20080	Full Ring, 220mm, TL-HEX (Sterile)
99-56-20220	Full Ring, 240mm, TL-HEX (Sterile)
99-56-20240	Full Ring, 280mm, TL-HEX (Sterile)
99-56-20340	Full Ring, 300mm, TL-HEX (Sterile)

5/8 Rings

Part Number	Description
56-21320	5/8 Ring 100mm TL-HEX
56-21200	5/8 Ring 120mm TL-HEX
56-21400	5/8 Ring 140mm TL-HEX
56-21420	5/8 Ring 160mm TL-HEX
56-21440	5/8 Ring 180mm TL-HEX
56-21460	5/8 Ring 200mm TL-HEX
99-56-21480	5/8 Ring 220mm TL-HEX (Sterile)
99-56-21220	5/8 Ring 240mm TL-HEX (Sterile)
99-56-21240	5/8 Ring 280mm TL-HEX (Sterile)
99-56-21340	5/8 Ring 300mm TL-HEX (Sterile)

3/8 Rings

Part Number	Description
56-23000	3/8 Ring 100mm TL-HEX
56-23020	3/8 Ring 120mm TL-HEX
56-23040	3/8 Ring 140mm TL-HEX
56-23060	3/8 Ring 160mm TL-HEX
56-23080	3/8 Ring 180mm TL-HEX
56-23100	3/8 Ring 200mm TL-HEX
99-56-23120	3/8 Ring 220mm TL-HEX (Sterile)
99-56-23140	3/8 Ring 240mm TL-HEX (Sterile)
99-56-23160	3/8 Ring 280mm TL-HEX (Sterile)
99-56-23180	3/8 Ring 300mm TL-HEX (Sterile)

FOOT PLATES

TL-HEX Foot Plates are available in 6 sizes with internal diameters of 120mm, 140mm, 160mm, 180mm, 200mm, 220mm

Part Number	Description
99-56-22000	Double Row FootPlate Assembly, 120mm (Sterile)
99-56-22020	Double Row FootPlate Assembly, 140mm (Sterile)
99-56-22040	Double Row FootPlate Assembly, 160mm (Sterile)
99-56-22060	Double Row FootPlate Assembly, 180mm (Sterile)
99-56-22080	Double Row FootPlate Assembly, 200mm (Sterile)
99-56-22100	Double Row FootPlate Assembly, 220mm (Sterile)
99-56-22440	Full Double Row Footplate, 160mm, TL-HEX (Sterile)
99-56-22450	Full Double Row Footplate, 180mm, TL-HEX (Sterile)

Material out of the tray (Sterile)

Part Number	Description
99-54-1750	K-Wire, 550mm, with Olive
99-54-1650	K-Wire, 450mm, no Olive

STRUTS

TL-HEX struts are available in 4 sizes (ultrashort, short, medium, long), providing adjustment range from 45mm to a maximum extension of 318mm.

Part Number	Length
50-10100	UltraShort Strut TL-HEX - 45mm-101mm
50-10200	Short Strut TL-HEX - 92mm-122mm
50-10300	Medium Strut TL-HEX - 114mm-184mm
50-10400	Long Strut TL-HEX - 158mm-318mm

UltraShort



Short



Medium



Long



CLIPS

The number clips indicate the strut number and the direction clips indicate the direction of gradual adjustment to simplify the patient interaction with the frame

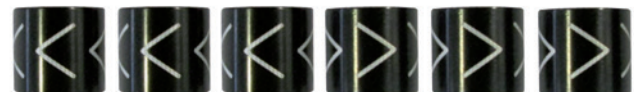
Number Clips

Part Number	Description
50-10215	Strut Number Clip Kit, TL-HEX (6 pcs) Consisting of: Strut Number Clip, #1, TL-HEX Strut Number Clip, #2, TL-HEX Strut Number Clip, #3, TL-HEX Strut Number Clip, #4, TL-HEX Strut Number Clip, #5, TL-HEX Strut Number Clip, #6, TL-HEX



Direction Clips

Part Number	Description
50-10214	Strut Direction Clip Kit, TL-HEX (6 pcs)

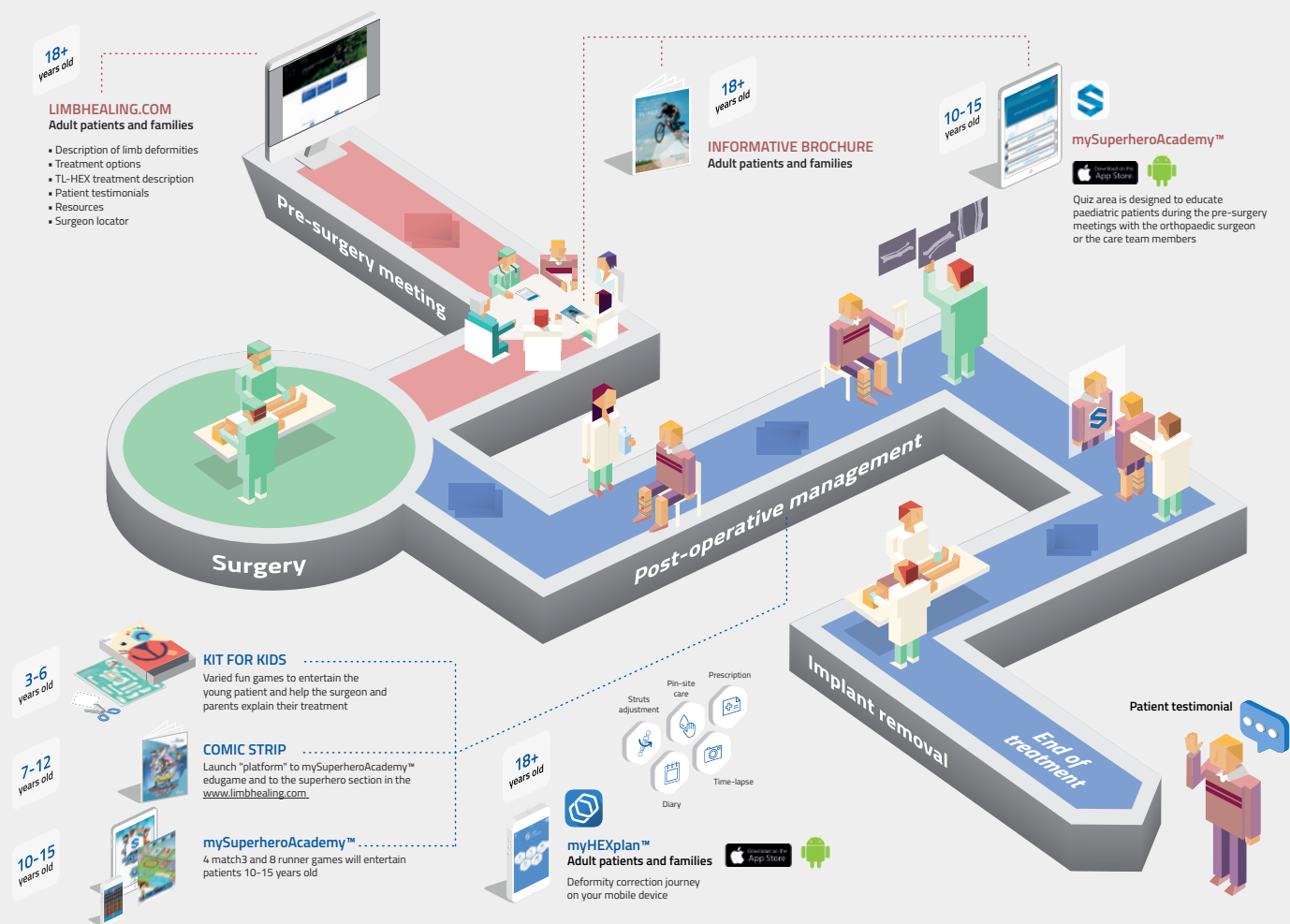


TL-HEX Strut Exchange Kit cod. 50-10500

Part Number	Description	Quantity
50-10180	TL Plus Medium Quick Adjust Strut	1
50-10190	TL Plus Long Quick Adjust Strut	1
52-10210	TL+ AO 1/8' Hex Power Driver Attachment	1
52-1018	TL - 1/8' Hex Driver	1
54-1154	TL - Wrench, Combo, 10mm	1
54-2226	TL - 90 Degree Tubular Wrench	1
50-13020	TL+ Extended Nut M6 X 1	2
50-10214	Strut Direction Clip Kit, TL-HEX (6 pcs)	1

Care HEXcellence

We are not just suppliers of products – we immerse ourselves in the process and offer help and support before, during and after surgery. Our aim is to reduce any worries about the surgery and healing process for families and patients by informing and educating, and to give surgeons resources to aid them in answering families' and patients' questions.



Ask your sales reps for free samples. Some materials/services may not be available in your Country.
 Please contact your sales representatives for availability.



www.LimbHealing.com

Featuring information on deformity, patient stories and more useful resources

Need Technical Support?

TL-HEX customer care is open 9am-5pm (CET) Monday to Friday (except bank and public holidays). Contact us for any support needed (forgotten password, further information requests, ...) on TL-HEX hardware and software.



CALL US
 +39 045 67 19 316



EMAIL US
 tlhexcustomer@orthofix.com

Distributed by:



Manufactured by:
 ORTHOFIX Srl
 Via Delle Nazioni 9, 37012 Bussolengo (Verona), Italy
 Telephone +39 045 6719000, Fax +39 045 6719380



orthofix.com tlhex.com

TL-1404-PL-E0 H 04/25

ORTHOFIX®