

## B. ProCallus™ Fixator (90000 series)



### ProCallus Fixator Kits

Complete with appropriate Compression-Distractor Unit and Allen Wrench 6mm.

**1**

#### **90001 Long**

(27.6cm between outermost screws when fixator body fully closed: extends by 8cm).

**2**

#### **90000 Standard**

(23.6cm between outermost screws when fixator body fully closed: extends by 4cm).

**3**

#### **90028 Short**

(21.6cm between outermost screws when fixator body fully closed: extends by 2cm).

Note: ProCallus Fixators are also available with Actuator and Allen Wrench 6mm. These are designated 90001C, 90000C and 90028C, respectively.

See Quick Reference Guide PG 06B "Diaphyseal and Metaphyseal Fractures - Part B: The ProCallus Fixator (90000 Series)" for application instructions.



Manufactured by:  
**ORTHOFIX Srl**  
Via Delle Nazioni 9, 37012 Bussolengo (Verona), Italy  
Telephone +39 045 6719000, Fax +39 045 6719380



# 1. Ball-Jointed Modules



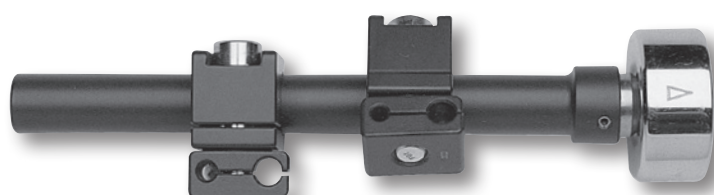
1



2



3



4



5



6

## 1 90006 ProCallus Straight Clamp

Allows the fixator to act as its own template and enables screws to be inserted in a plane parallel to the diaphyseal axis of the bone.

## 2 90007 ProCallus T-Clamp

Allows the fixator to act as its own template and enables screws to be inserted in a plane at right angles to the diaphyseal axis of the bone.

## 3 90090 Elbow Extended Range Clamp

Acts as its own template for screw insertion in the ulna. It is used when a wider choice of angle for screw placement is necessary. See section "Elbow Fixator".

## 4 10054 Ball-Jointed Module for Independent Screw Placement

For iliac crest applications. Consisting of: 1 Bar with Ball-Joint and 2 Independent Screw Clamps. Enables screws to be placed freehand in chosen positions on the iliac crest. See section "Pelvic Fixator".

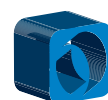
## 5 90046 RadioLucent Ankle Clamp

(For left and right application). (See Manual PM 070 "Distal Tibial and Pilon Fractures with the RadioLucent Ankle Clamp" for application instructions). This module should be applied with its appropriate RadioLucent Ankle Pin Guide, see subsection 5. Templates. RadioLucent Ankle Clamp and RadioLucent Ankle Pin Guide are also available as a sterile kit, see subsection 2. Sterile Radiolucent Ankle Kit.

## 6 80022 Procallus Fixator Hybrid Connection

For fixator bodies 90000, 90001, 90028.

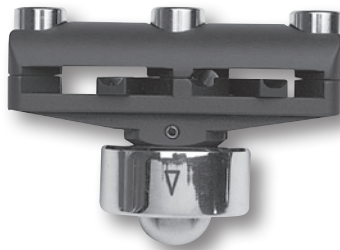
To be used for Hybrid frames with the TL-HEX TrueLok Hexapod System®



## Ball-Jointed Modules



7



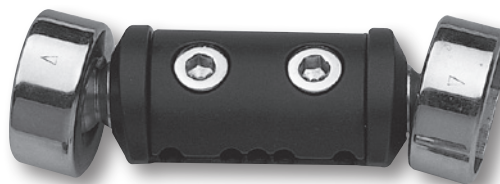
8



9



10



11

7

### **10043 Metaphyseal Clamp**

Consists of a horizontal and a vertical component, for screw placement in both epiphyseal and meta-diaphyseal regions of the bone.

8

### **10052 Torbay-Garches Clamp**

For convergent screw placement in a plane at right angles to the diaphyseal axis of the bone, in cases where space is limited.

9

### **10042 Trauma-Garches Clamp**

For convergent screw placement in a plane at right angles to the diaphyseal axis of the bone, in cases where space is limited.

10

### **10040 Angled Clamp**

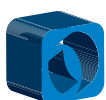
Allows screws to be inserted along the femoral neck at an angle of  $125^\circ$  to the longitudinal axis of the bone. Use special screw guide 11124, drill guide 11125 and drill bit kit 11007.

11

### **10023 Double-Coupling Clamp**

For joining two D.A.F. or ProCallus units in series. Normally used for central dislocation of the hip.

Note: Modules 7 to 10 above should be applied using the appropriate template, see subsection 5. Templates.



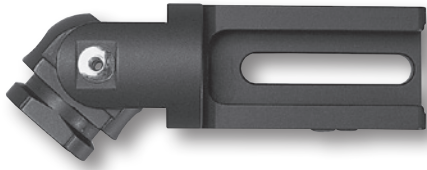
## 2. Sterile Radiolucent Ankle Kit



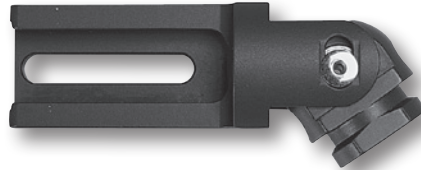
**1**  
**99-90646 RadioLucent Ankle Clamp Kit, sterile**  
Consisting of: 1 RadioLucent Ankle Pin Guide, sterile and 1 RadioLucent Ankle Clamp, sterile.



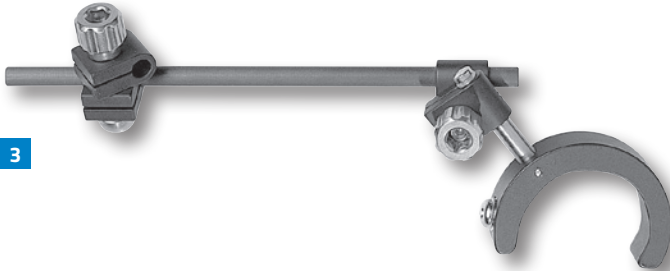
### 3. Non Ball-Jointed Modules



1



2



3



4



5



6

#### 1 90022 ProCallus Articulated Body for the Hip

For arthrodiastasis.

#### 2 90036 ProCallus Self-aligning Articulated Body

For progressive correction of angular deformity  
(hemicallositas).

#### 3 90037 Supplementary Screw Holder (Bar, Clamps and Fixator Body Attachment)

#### 4 90038 Supplementary Screw Holder Clamp

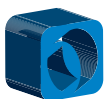
#### 5 90035 ProCallus Self-aligning Articulated Body Assembly Kit

Consisting of:

- 1x90036 ProCallus Self-aligning Articulated Body
- 1x90018 ProCallus Standard Central Body Male Component
- 1x90016 ProCallus Central Body Locking Nut
- 2x90005 Bush
- 2x10004 Cam
- 1x90006 ProCallus Straight Clamp
- 1x90007 ProCallus T-Clamp
- 1x90015 ProCallus Micromovement Locking Nut
- 1x10008 Compression-Distractor Unit Standard, extend to 4cm

#### 6 Supplementary Screw Holder Bars Ø 6 mm

- 10039 Length 150 mm
- 80043 Length 300 mm
- 10041 Length 400 mm

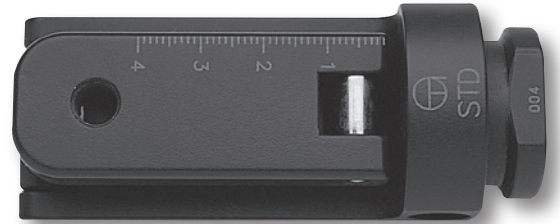




## 4. Components/Replacements



1



2



3



4



5



6



10



7



8



9



11



12

**1**  
**ProCallus Central Bodies**  
Complete with 2 Cams, 2 Bushes,  
1 ProCallus Micromovement Locking Nut and  
1 ProCallus Central Body Locking Nut.  
**90002** Standard  
**90003** Long  
**90029** Short

**2**  
**ProCallus Central Body Male Components**  
**90018** Standard  
**90020** Long  
**90031** Short

**3**  
**ProCallus Central Body Female Components**  
**90019** Standard  
**90021** Long

**90032** Short

**4**  
**90015 ProCallus Micromovement Locking Nut**

**5**  
**90016 ProCallus Central Body Locking Nut**

**6**  
**90005 Bush**

**7**  
**10004 Cam**

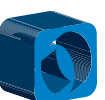
**8**  
**90014 ProCallus Clamp Screw**

**9**  
**90045 RadioLucent Ankle Clamp Articulation Locking Nut**

**10**  
**Compression-Distraction Units**  
**10008** Standard  
Extends to 4cm.  
**10009** Long  
Extends to 8cm.  
**10030** Short  
Extends to 2.75cm.

**11**  
**ProCallus Actuators**  
For early applied cyclic micromovement before patient can weightbear.  
**90008** Standard  
Extends to 4cm.  
**90009** Long  
Extends to 8cm.  
**90030** Short  
Extends to 2.75cm.

**12**  
**10033 Compression-Distraction Unit Silicone O-Rings** (pack of 10)



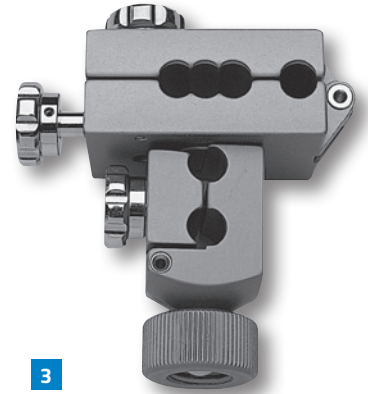
## 5. Templates



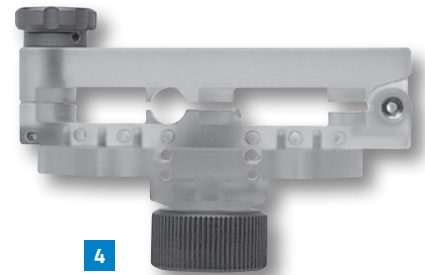
1



2



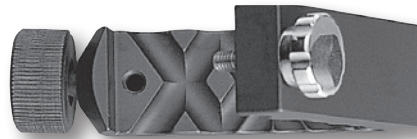
3



4



5



6

**1**  
**11947 RadioLucent Ankle Pin Guide**  
To provide visualization of rotational axis of the tibio-talar joint and correct screw positioning.

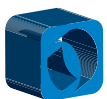
**2**  
**99-11947 RadioLucent Ankle Pin Guide, sterile**

**3**  
**11143 Metaphyseal Clamp Template**

**4**  
**11152 Torbay-Garches RadioLucent Clamp Template**

**5**  
**11142 Trauma-Garches Clamp Template**

**6**  
**11140 Angled Clamp Template**



PROCALLUS FIXATOR (90000 SERIES)

## 6. Instrumentation



1



2



3

**1**  
**10017 Allen Wrench 6mm**

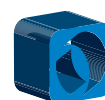
**2**  
**10025 Torque Wrench 6mm**  
ONLY used for locking the cams of the ball-joints: it should be rotated clockwise until a click is heard.

**3**  
**11201 Fixator Self-Locking Manipulation Forceps**  
To distance surgeon's hands from X-ray during fracture reduction.

**11190 ProCallus Assembly Kit**  
Consisting of:  
6x11102 Screw Guide, length 60mm  
6x11103 Screw Guide, length 100mm  
1x11106 Drill Guide Ø 3.2mm, length 40mm

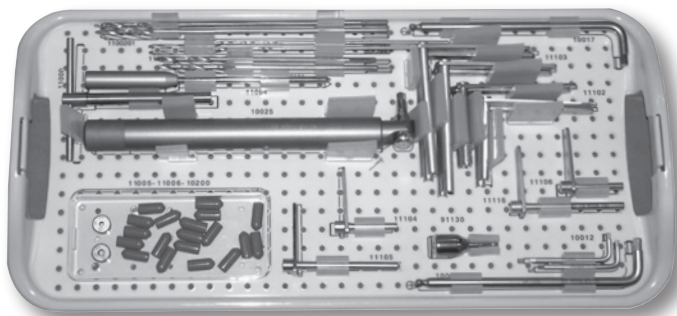
1x11104 Drill Guide Ø 4.8mm, length 40mm  
1x11116 Drill Guide Ø 3.2mm, length 80mm  
1x11105 Drill Guide Ø 4.8mm, length 80mm  
1x11004 Tapered Trocar

Note: See also instrumentation for bone screw insertion (section "Bone Screws").

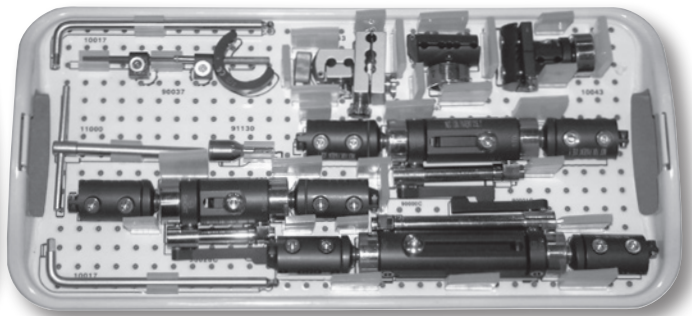




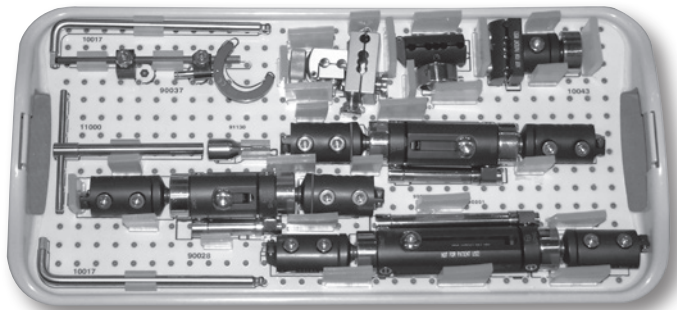
## 7. Sterilization Boxes



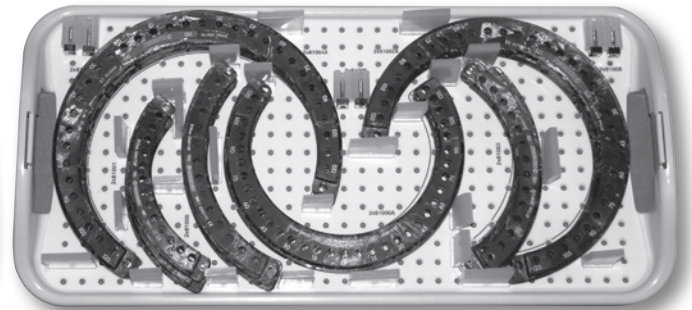
1



2



3



4

### 1 90970 ProCallus Instruments Steribox, empty

Can accommodate:

- 2x10017 Allen Wrench 6mm
- 2x1100301 Drill Bit, 200mm Ø 3.2mm
- 2x1100101 Drill Bit, 180mm Ø 4.8mm
- 2x1100201 Drill Bit, 240mm Ø 4.8mm
- 2x10012 Allen Wrench 3mm
- 1x11000 T-Wrench
- 1x11106 Drill Guide, 40mm Ø 3.2mm
- 1x11116 Drill Guide, 80mm Ø 3.2mm
- 1x11104 Drill Guide, 40mm Ø 4.8mm
- 1x11105 Drill Guide, 80mm Ø 4.8mm
- 6x11102 Screw Guide, 60mm
- 6x11103 Screw Guide, 100mm
- 1x10025 Torque Wrench
- 1x10200 Screw Covers (pack of 20)
- 1x11005 Drill Bit Kit, Stop Unit Ø 4.8mm
- 1x11006 Drill Bit Kit, Stop Unit Ø 3.2mm
- 1x11004 Tapered Trocar

### 2 90980 ProCallus System with Actuator Steribox, empty

Can accommodate:

- 1x90028C ProCallus Short Kit
- 1x90000C ProCallus Standard Kit
- 1x90001C ProCallus Long Kit
- 1x90007 ProCallus T-Clamp
- 1x91150 Universal T-Wrench
- 1x10043 Metaphyseal Clamp
- 1x90037 Supplementary Screw Holder
- 2x10017 Allen Wrench 6mm
- 1x11143 Metaphyseal Clamp Template

### 3 90990 ProCallus System Steribox, empty

Can accommodate:

- 1x90028 ProCallus Short Kit
- 1x90000 ProCallus Standard Kit
- 1x90001 ProCallus Long Kit

- 1x90007 ProCallus T-Clamp
- 1x91150 Universal T-Wrench
- 1x10043 Metaphyseal Clamp
- 1x90037 Supplementary Screw Holder
- 2x10017 Allen Wrench 6mm
- 1x11143 Metaphyseal Clamp Template

### 4 81990 XCaliber/ProCallus Hybrid System Rings Steribox, empty

See section "XCaliber External Fixator", subsection 3. Sterilization Boxes.

