

PORD™ DEVICE

PORD
POSTERIOR REDUCTION

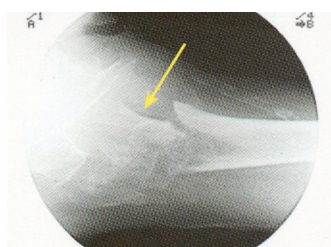
POSTERIOR Reduction for HIP and FEMUR Fractures



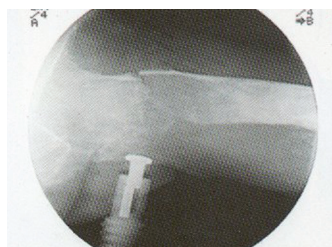
- Simple, fast and accurate reduction of posterior fracture sagging
- Radiolucent support
- Maintains reduction during fracture fixation
- No obstruction of C-arm
- Compatible with most fracture tables

The PORD™ (Posterior Reduction) Device is placed under the patient's proximal femur during surgery and is used to correct posterior sagging of the fracture and maintain the reduction during fixation. Designed with a radiolucent ledge, the fracture site is supported and can be clearly visualized with the image intensifier.

Radiolucent Ledge maintains the reduction during fixation, and allows AP visualization of the fracture.



Posterior Sagging



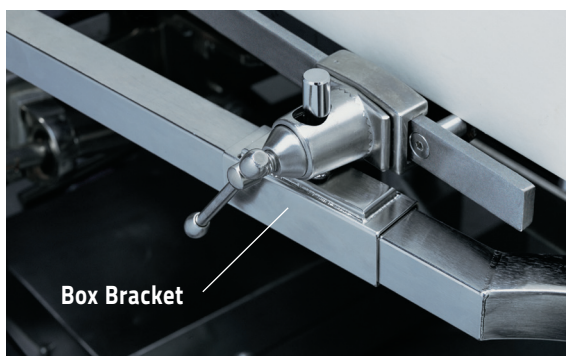
Posterior Reduction

Adjustment Nut
Nut is turned through the drape for intraoperative adjustment.

Limb Support
moves up and down both with and independently from the O.R. table.

Lug Screw
secures limb support.

Horizontal Bar
Curved design allows for unobstructed C-arm access to the proximal femur for both AP & lateral imaging.



Box Bracket

Using the Box Bracket, the PORD device will adapt to most fracture tables. From an inferior approach, the vertical post of the box bracket slides into the Clark Attachment* and is locked into place. The horizontal bar is placed through the Box Bracket with the curved portion toward the fracture table.



The Limb Support is positioned under the fracture area, posterior sagging is corrected and confirmed by AP and lateral imaging. Once the fracture is aligned, the Lug Screw is tightened, and the patient is prepped and draped for surgery.

PORD Posterior Reduction Device (110000)

Includes:

- Horizontal Bar
- Box Bracket
- Limb Support
- Nut

* Clark Attachment not included



Manufactured by:
ORTHOFIX Srl
Via Delle Nazioni 9, 37012 Bussolengo
(Verona), Italy
Tel: +39 045 6719000
Fax: +39 045 6719380
www.orthofix.com



Distributed by:

