

INSTRUMENT TRAY LAYOUT

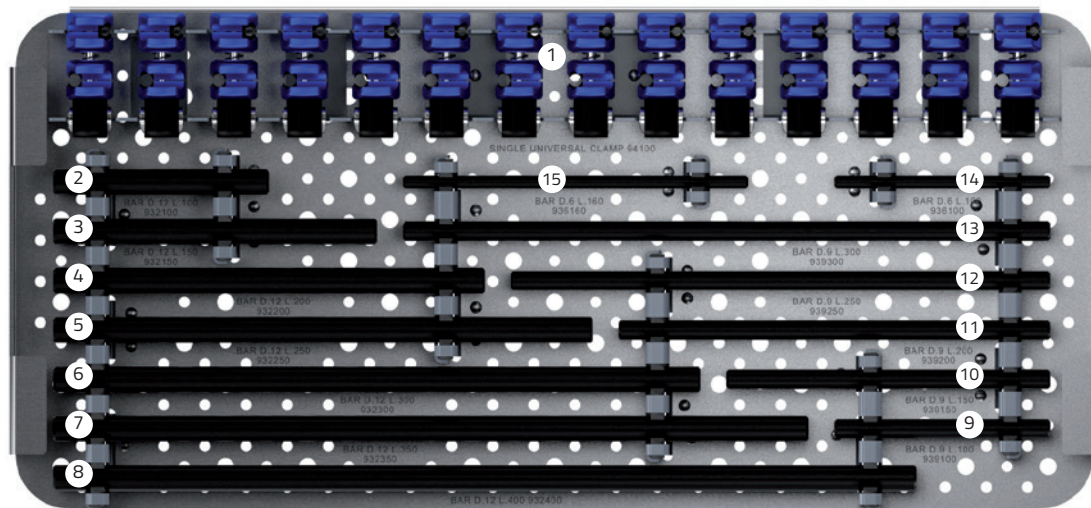
Galaxy Fixation

Gemini™ System



GALAXY FIXATION GEMINI™ Sterilization Tray Empty 94600

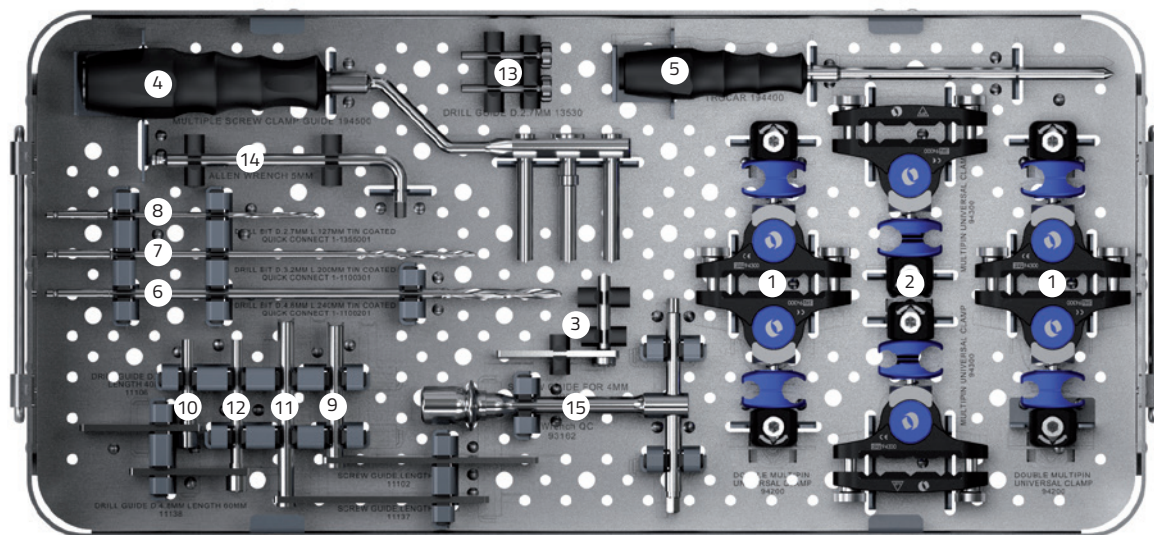
TOP LAYER



GALAXY FIXATION GEMINI™ STERILIZATION TRAY EMPTY - TOP LAYER

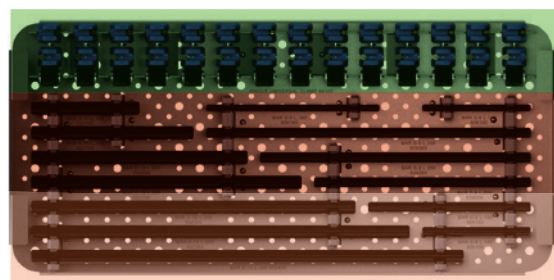
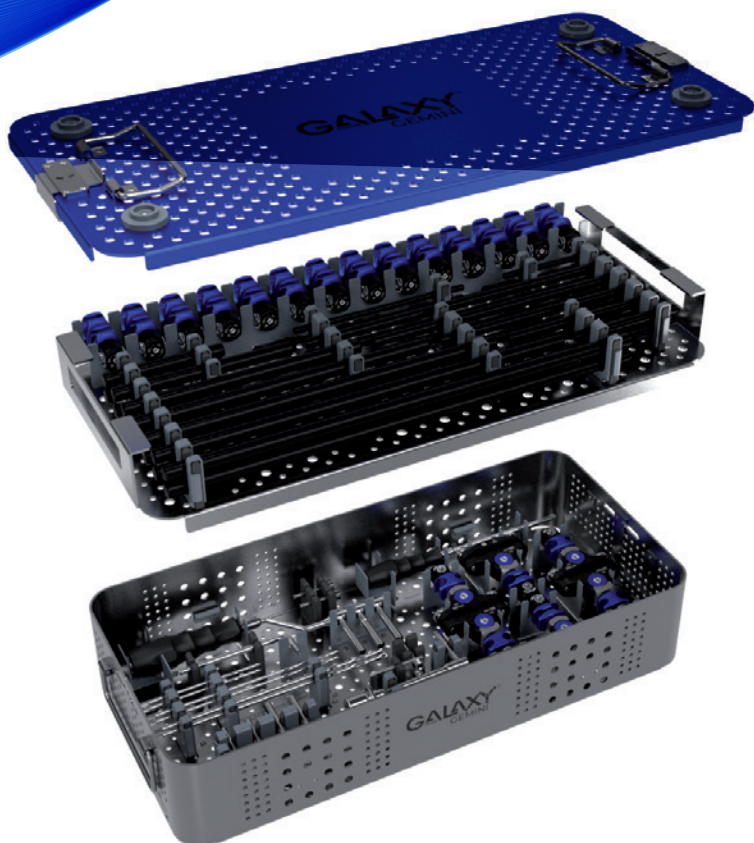
	Part #	Description	Quantity
1	94100	GALAXY FIXATION GEMINI UNIVERSAL SINGLE CLAMP	14
2	932100	ROD D 12 MM L 100 MM	2
3	932150	ROD D 12 MM L 150 MM	2
4	932200	ROD D 12 MM L 200 MM	2
5	932250	ROD D 12 MM L 250 MM	2
6	932300	ROD D 12 MM L 300 MM	2
7	932350	ROD D 12 MM L 350 MM	2
8	932400	ROD D 12 MM L 400 MM	2
9	939100	ROD D 9 MM L 100 MM	2
10	939150	ROD D 9 MM L 150 MM	2
11	939200	ROD D 9 MM L 200 MM	2
12	939250	ROD D 9 MM L 250 MM	2
13	939300	ROD D 9 MM L 300 MM	2
14	936100	ROD D 6 MM L 100 MM	2
15	936160	ROD D 6 MM L 160 MM	2

BOTTOM LAYER



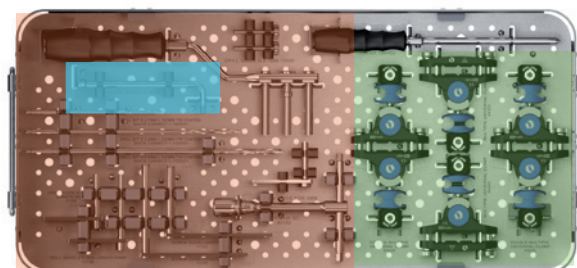
GALAXY FIXATION GEMINI™ STERILIZATION TRAY EMPTY - BOTTOM LAYER

Part #	Description	Quantity
1	94200 GALAXY FIXATION GEMINI DOUBLE UNIVERSAL MULTIPIN CLAMP	2
2	94300 GALAXY FIXATION GEMINI UNIVERSAL MULTIPIN CLAMP	2
3	19995 SCREW GUIDE	2
4	194500 GALAXY FIXATION GEMINI SCREW GUIDE	1
5	194400 GALAXY FIXATION GEMINI TROCAR	1
6	1-1100201 DRILL BIT D.4,8 MM L.240 MM TIN COATED - QUICK CONNECT	2
7	1-1100301 DRILL BIT D.3,2 MM L.200 MM TIN COATED - QUICK CONNECT	2
8	1-1355001 DRILL BIT D.2,7 MM L.127 MM TIN COATED - QUICK CONNECT	2
9	11102 SCREW GUIDE, LENGTH 60 MM	2
10	11106 DRILL GUIDE DIAMETER 3.2 MM LENGTH 40 MM	2
11	11137 SCREW GUIDE, LENGTH 80 MM	2
12	11138 DRILL GUIDE DIAMETER 4.8 MM LENGTH 60 MM	2
13	13530 DRILL GUIDE DIAMETER 2.7 MM	2
14	30017 ALLEN WRENCH 5 MM	1
15	93162 T-WRENCH HEXAGON 5-5 QC OR 91150 UNIVERSAL T-WRENCH	2



■ Clamps

■ Rods



■ Bone screw insertion instruments

■ Wrench for clamp definitive tightening

■ Multipin clamps

Please refer to the "Instructions for Use" supplied with the product for specific information on indications for use, contraindications, warnings, precautions, adverse reactions and sterilization.

Electronic Instructions for use available at the website <http://ifu.orthofix.it>

Electronic Instructions for use - Minimum requirements for consultation:

- Internet connection (56 Kbit/s)
- Device capable to visualize PDF (ISO/IEC 32000-1) files
- Disk space: 50 Mbytes

Free paper copy can be requested from customer service (delivery within 7 days):

tel +39 045 6719301, fax +39 045 6719370,

e-mail: customerservice@orthofix.it

Caution: Federal law (USA) restricts this device to sale by or on the order of a physician. Proper surgical procedure is the responsibility of the medical professional. Operative techniques are furnished as an informative guideline. Each surgeon must evaluate the appropriateness of a technique based on his or her personal medical credentials and experience.


 Manufactured by:
 ORTHOFIX Srl
 Via Delle Nazioni 9, 37012 Bussolengo
 (Verona), Italy
 Telephone +39 045 6719000,
 Fax +39 045 6719380
www.orthofix.com

Rx Only

CE 0123

Distributed by:

