

CalcFix Plus

Calcaneal Fixator System

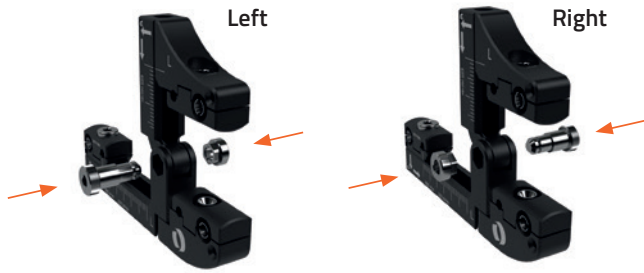
A big *Plus* for Calcaneal fracture treatment

- + Quick in the application
- + Compact
- + Improved X-ray visualization*
- + Versatile
- + Easy to use

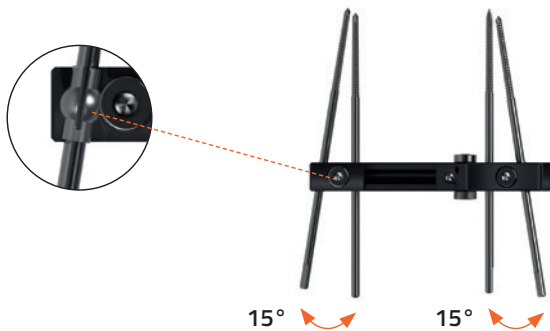


*Compared to the previous design

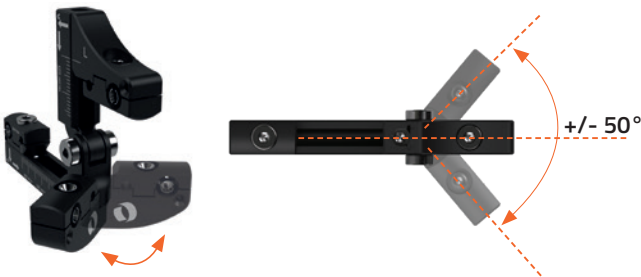
Ambidextrous design for the application
on either side, left or right foot



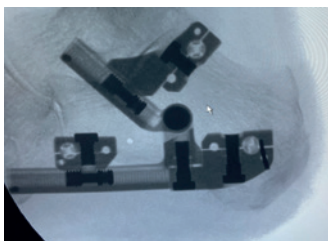
The external half-pins can be positioned
with a cone angle of $\pm 15^\circ$ within the space



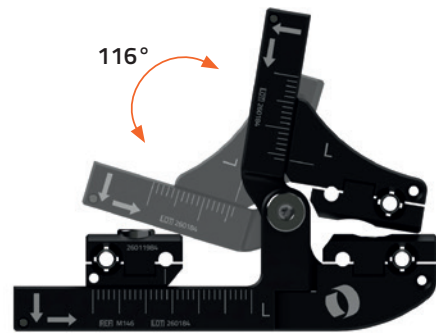
Varus-valgus orientation of the posterior clamp



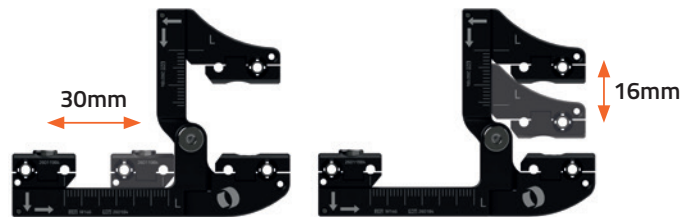
The new design uses less steel, which allows for
improved x-ray visualization of the bone



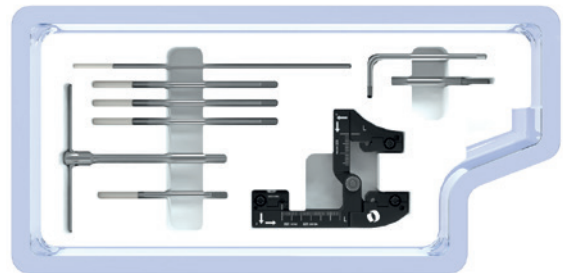
The swivelling arm has an angle of rotation up to 116°
and can be locked at the desired angulation



The two arms of the fixator have integrated rails to allow
compression/distraction of the anterior and superior clamps



Available in a Ready-to-Use Sterile Set



99-M1460 CalcFix Plus Calcaneal Fixator Set Sterile

Part #	Description
10012	ALLEN WRENCH, 3mm
M210	T-WRENCH FOR BONE SCREWS
M211	DRIVER FOR 3MM SHAFT SCREWS
M146	CALCFIX PLUS CALCANEAL FIXATOR
M315	SELF-DRILLING, CORTICAL SCREW, LENGTH 70/25mm D 3.0-2.5mm
M317	SELF-DRILLING, CORTICAL SCREW, LENGTH 100/30mm D 3.0-2.5mm
1371501	KIRSCHNER WIRE LENGTH 150mm DIAMETER 1.5mm

Distributed by:



Manufactured by:
ORTHOFIX Srl
Via Delle Nazioni 9, 37012 Bussolengo (Verona), Italy
Telephone +39 045 6719000, Fax +39 045 6719380



Rx Only



orthofix.com

CF-2202-PL-E0 B 12/22

ORTHOFIX®
ORTHOPEDICS